

Kingsley Park Primary School

Respect ~ Excellence ~ Resilience ~ Co-Operation ~ Community

SCHOOL NEWSLETTER - THURSDAY 24TH APRIL 2025

A reminder to our school community that photos are scheduled for

Monday 5th May

Orders are open now and can be placed via www.advancedlife.com.au using the school code **9C6 MYF G2Y**

It is very important that any orders for sibling photos be placed by **Sunday 4th May** - this will ensure that allocated time is provided to take all photo's and sufficient staff are available on site from the photography company.

SCHOOL ASSEMBLIES - TERM 2

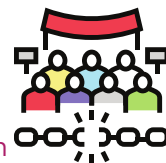
Assemblies Term 2: Assembly times will continue in the mornings starting at 9am.

Week 1 starts off with our ANZAC Day service on Thursday 24th April at 10am.

Week 2 starts our rotation of Module assemblies alternating with whole school assemblies.

Friday 2nd May is Module assemblies.

Friday 9th May is Whole School assembly dedicated to mother's day.



Welcome back to Term 2.

It seems kind of weird starting with a 3 day week but hopefully, it helps students to have an easy start back with getting used to early mornings and school routines again.

Term 2 kicks off quickly for us with - our year 3-6 School Cross Country event on Thursday 1st May at Robinsons reserve.



School Photos are just around the corner on Monday 5th May - so don't be away) and Mother's Day is fast approaching.

Our Mother's Day stall will be held on Thursday 8th May. On Friday 9th May there will be a special Mother's Day assembly followed by activities in classrooms.

No matter how old we are, our mums play a pivotal role in our lives and are so important to us. There are as many ways to be a mother or grandmother as there are mums and grandmas (or Miimis, Ammis or Yia-yias or a very special person who fulfils that role). To celebrate all the amazing mother figures in our lives, we're putting the spotlight on our mums on Friday 9th May from 9am. Join us for assembly followed by classroom activities.

Thank you to the families who came to join us for our ANZAC service this morning and to the many who supported the RSL in raising funds through their annual badge selling.

Term 2 Dates

Tuesday 22nd April - Friday 4th July
Curriculum Day - Friday 23rd May

SCHOOL PHOTO DAY IS COMING UP SOON

ORDER NOW

School: Kingsley Park Primary School
Date of photography: 5/05/2025
Place order by: 15/05/2025

HOW TO ORDER



OPTION 1 ORDER AND PAY ONLINE USING YOUR MOBILE



Scan this QR code using your mobile phone camera to go straight to your school's package options and order photos

OPTION 2 ORDER AND PAY ONLINE USING YOUR COMPUTER



Go to www.advancedlife.com.au and enter your school's 9 digit order code

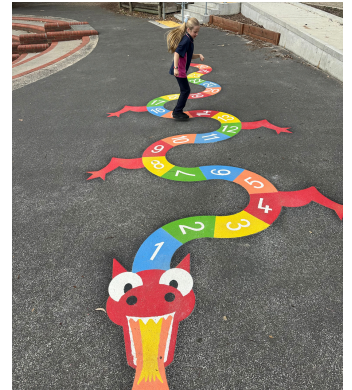
9C6 MYF G2Y

Should you have any questions please contact us at www.advancedlife.com.au/contact

CARNIVAL FUNDRAISING



The SRC were very excited in one of their first meetings this year to vote on their favourite exciting new outdoor floor designs for students to use when enjoying outside play. We have now turned our carnival fundraising into fun activities for our Kingsley Kids. Snakes and ladders was one of the first to arrive as well as 'Mirror me' and a number dragon! More designs are on the way in the coming weeks.



Kingsley Park Embraces PLAY and Movement in Learning!



**Peninsula
Health**

Kingsley Park Primary is excited to be part of the SCHOOL OF PLAY (Positivity, Leadership, and Activated Youth) program—an initiative designed to build student leadership, boost wellbeing, and get kids moving! Through PLAY, our students are learning how to lead active games, build positive relationships, and create a more connected school community. We're also proud to be working closely with Peninsula Health to bring more movement into our learning. Teachers are exploring fun, active ways to energise the classroom—helping students stay focused, engaged, and ready to learn.

With PLAY and movement-based learning, Kingsley Park is taking big steps toward a healthier, happier school environment!



IMPORTANT DATES



TERM 2

Thursday 24th April
ANZAC Service 10am

Friday 25th April
ANZAC day Public Holiday

Thursday 1st May
Years 3-6 House Cross Country
Come dressed in your House colors and bring your House Spirit along for a fun day.

Friday 2nd May
Module Assembly

Monday 5th May
School Photo Day

Thursday 8th May
Mother's Day Stall
District Girls Footy - Seniors
Sydney Dance Company - Year 2

Friday 9th May
Mother's Day assembly followed by Mother's Day activities in classrooms until 10.20am.

Thursday 15th May
Frankston Youth Services - Seniors

Friday 16th May
Module Assembly

Tuesday 20th May
District Cross Country

Thursday 22nd May
Frankston Youth Services - Year 6

Friday 23rd May
Curriculum Day / Student Free Day

Tuesday 27th May - Tuesday 3rd June
Reconciliation Week

Friday 30th May
Module Assembly

Friday 6th June
Whole School Assembly

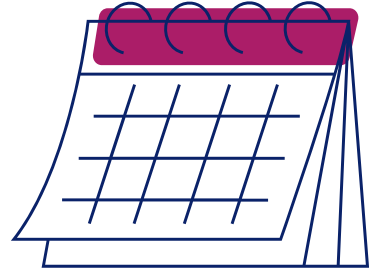
Monday 9th June
Kings Birthday Public Holiday

Friday 13th June
Module Assembly

Friday 20th June
Whole School Assembly

Friday 27th June
Winter Lightning Premiership - Seniors
Module Assembly

Friday 4th July
Whole School Assembly
SEA Puberty Incursion - Seniors
End of Term 2



**HOUSE CROSS COUNTRY
FOR ALL STUDENTS
THURSDAY 1ST MAY**



House Cross Country next week will now also include our Prep and Junior students. Come and join us on Thursday 1st May for the House Cross Country events; Years 3-6 will be running their event from 11.30am at Robinson Reserve. They will walk to and from the event with staff. Parents are most welcome to join us for the walk or meet us there.

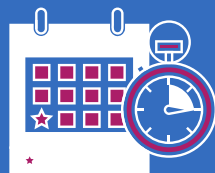
Years P-2 will complete their event after lunch on Thursday 1st May.

Students will meet on the oval at 2.25 to begin their fun event. Preps will do some laps of the oval while Years 1 and 2 will run a wider circuit around the school.

We would love for all students to dress in their House Color for the day and 'shooshie' it up with a bit of fun in their outfits.

While some students are excellent runners and compete for a placing, not all students like to run fast but are happy to walk or jog at their own pace and still be part of the fun of the day.

All participants earn House Points and extra house points will be awarded for sportsmanship, outfits and cheering others on.



Term Dates 2025

Term 1: 28th January
(students commence 29th January, Preps 30th January)
- 4th April

Term 2: 22nd April - 4th July

Friday 23rd May - Curriculum Day / Student Free Day

Term 3: 21st July - 19th September

Term 4: 6th October - 19th December

School Wide Positive Behaviour Framework

Kingsley Park PS is working towards a school wide positive behaviour framework which involves the establishment of a Continuum of Behaviour Support that considers all students and emphasises prevention.

Many schools have implemented this due to the increasing nature of inappropriate behaviours in schools.

The primary prevention aspect of positive behaviour supports (PBS) consists of values that are explicitly taught and modelled by school staff to encourage appropriate behaviour. Teaching behavioural expectations and acknowledging students for meeting them is a much more positive approach than waiting for misbehaviour to occur before responding. For this to happen effectively, students, staff and parents all need to have the same understanding of behaviours, their impact and the behaviour steps to manage these.

Key components of PBS include:

- An agreed-upon common approach
- Consistency of language
- Explicit teaching of expectations (Be Safe, Be Respectful/Kind, Be a learner)
- Regular and frequent opportunities to practise expected behaviours
- Recognition for meeting behavioural expectations
- Students are acknowledged in a number of ways through stickers, shout outs and acknowledgements.

PBS is an approach to enabling a safe and productive learning environment where teachers can teach, and all students can learn. Whilst we acknowledge that some students may have a diagnosis and do not always have intent behind their behaviours, it is expected that parents and the school work together to understand and reduce these behaviours and the impact they have on others. These students can learn expectations and behaviours, they may take longer to learn them but most often thrive with boundaries and routines.

The purpose of school-wide PBS is to establish a climate in which appropriate behaviour is the norm.

"If a child doesn't know how to read, we teach"

"If a child doesn't know how to write, we teach"

"If a child doesn't know how to count, we teach"

"If a child doesn't know how to behave, we teach them how to behave"

We are devising a matrix of Minor, Moderate and Major behaviours and the behaviour steps that will be used to manage them and the outcomes. Therefore, we will be seeking your input shortly. If we can all work together on these agreed expectations and outcomes, we will also see a change in expectations, a change in our school culture, more students feeling safe and connected with school and much improved time for student learning, which is our core business.

Further information will be sent out to parents next week seeking your thoughts. Please take the time to provide us with feedback so we are informed of parents thoughts and that as part of our school community, we have your input.

Be Safe

Be Respectful

Be a Learner

BEHAVIOUR STEPS





Term 2 – 2025

Welcome to Term 2 for Prep!

We have had such a successful start to the year with students settling into school quickly in Term 1. Term 2 has lots planned and we look forward to seeing our Prep children continue to grow and flourish at school.

Prep - Term 2 Overview

Literacy

In Reading this term we are continuing to identify and blend the sounds we see in words to help us read. We are also working on our ability to hear words that rhyme. To assist us with this, we are reading high quality mentor texts to explore retelling stories by identifying the beginning, middle and end and sequencing events. Later in the term we are going to focus on telling the difference between facts and made up stories to help us recognise fiction and non fiction texts.

In Phonics we will continue to learn the sequence of sounds as part of our systematic synthetic phonics program. The sequence aligns with the letter/sound relationships that appear in the Decodable Australia books we will read at school and at home. Our focus will be working with CVC words (Consonant Vowel Consonant) where we will decode (sound out and blend sounds together to read a word) and encode (identify the sound, its matching letter and write that letter in the word). Later in the term we will start to explore CVCC and CCVC words.

In Writing this term we will continue to develop our handwriting skills using the Hartley Knows program. This program uses a specific language of shapes to help students with the correct letter formation. For example the letter a is a ball, short stick. We will develop our writing at sentence level, writing short sentences that include CVC words and sight words through the use of dictation. For example: 'Stan had a spin on the pin'. We will further explore creating different text types such as a recount about our weekend or a retell of a story to assist students in developing ideas for their writing.

Numeracy

This term in Numeracy, students will be working on developing the foundations of number and place value. They will explore how groups of ten combine to make large numbers between 20 and 99. They will further develop their understanding of place value by recognising that two-digit numbers are made up of groups of tens and ones. These number concepts will assist students in developing their skills and knowledge of teen numbers, when we introduce these in Term 3. In developmental play we will engage in role play to explore pretend shops and supermarkets, where students will begin to exchange play money. We will also spend time learning about positional language, ordinal numbers and following a short sequence of instructions.

Numeracy skills and knowledge can be learned at home every day by having real-life experiences with counting and measuring through cooking, sorting out toys, exploring different shapes and sizes and by talking about the days of the week and months.

Topic : What makes our country special

This term our Preps are lucky enough to spend their Topic sessions with Mrs Fillis. Our Integrated Topic is "What Makes our Country Special". We look forward to exploring our students' family connections, cultural backgrounds and the backgrounds of others in our community. The students will also learn about the importance of Aboriginal and Torres Strait Islander peoples' histories and the Country/Place on which Kingsley Park is located.

We will welcome the students Grandparent's in for a morning of crafting activities mid-way through the term.

How can I support my child's learning at home ?

Please continue your home learning routines daily.

Read aloud to your child: We encourage parents/carers to read with their child regularly, this allows them to be exposed to books they are interested in.

Take Home Reading: Around Week 6, we will have introduced all sounds of the basic code and we will be continuing to send all students home with a decodable book. Encourage your child to blend these sounds together once they have sounded out each letter.

Ask students about what letter they learnt about at school: Ask your child to say the phonics rhyme that goes with that letter, the sound it makes, what the letter looks like in upper and lower case as well as starting to find these letters in their everyday environment.

We look forward to continuing a wonderful year in Prep. If you would like to contact us further please do so via phone or through the Sentral Parent portal.

Hayleigh, Bree and Alysha

TERM 2- OVERVIEW

YEARS 1 & 2



Welcome back to Term 2! We are eagerly anticipating an exciting term ahead, filled with fun and learning. We have plenty of fun activities lined up, including a fantastic excursion to Myuna Farm!

Year 1

English

Phonics: During our Phonics sessions, our Year 1 students will start exploring 'R' controlled vowels ('ar', 'er' and 'or'), and diphthongs (oi, ow). Through spelling exercises, exploring high-frequency words, engaging in phonics activities, and partner reading passages, students will familiarise themselves with these letter sounds in meaningful contexts. Additionally, they will build on their morphology skills to recognise and gain a better understanding of the role that suffixes (including ed, ing, er, est & less) play in changing a word's meaning.

Reading & Writing: Students will investigate a series of information texts aligned with our term topic, 'Paddock To Plate'. Through these texts, students will not only expand their reading ability but also learn how such texts are structured, including elements like indexes, glossaries, and captions. Students will learn that non-fiction texts are designed to share information. They will start writing their own informative texts using complete sentences and following a simple structure to organise their ideas. Students will explore the language features of these text types, and how nouns, verbs, adjectives, and adverbs come together to form sentences. Students will be shown basic grammar and punctuation features and encouraged to include these in their own writing.

Numeracy

In Term 2, our focus in Number will primarily revolve around expanding on the foundational concepts established in Term 1. Building on their understanding of place value, your child will delve deeper into the realm of numbers, consolidating their skills to read, make, write, and order numbers up to 120. Moreover, they will begin applying these fundamental concepts to solve equations and worded problems using addition and subtraction operations. To aid in their mathematical journey, your child will explore various mental and written strategies such as counting on and back, recognising doubles and near doubles facts, understanding friends of ten, and forming number bonds. They will also learn to tackle addition and subtraction challenges utilising a range of concrete materials such as hundred charts, number lines, and counters. In Space, your child will also embark on an exploration of 2D shapes by considering shapes that we see in our everyday lives and how we can classify them as similar or different.

Junior Topic

This term, our focus will be on Topic - 'Paddock to Plate'. In the Junior school, students will explore 'Paddock to Plate' through different hands-on activities and interactive lessons. Our lessons will investigate concepts like earth's resources and how they are used, life cycles and food preparation. At the end of the term we will go on our Junior excursion where we will explore Myuna Farm in Doveton.

Problem Solving

Problem-solving remains a crucial component of our curriculum. Each week, your child will use the 'CUBES' strategy to understand how to break down a worded problem. Students will then be exposed to new problem-solving strategies to solve the question such as; draw a picture.

Year 2

English

Phonics: Year 2 students will continue to learn more about R-controlled vowels ('ear', 'er' and 'or') and diphthongs ('oi', 'oy', 'ow' and 'ou'); as well as being introduced to the 'The Great Australian Schwa' sound. Students will also continue to explore morphology focusing on prefixes, suffixes and word families. Students will be exposed to these sounds and morphemes through spelling, exploring high frequency words, phonics activities and their partner reading passages.

Reading and Writing: Year 2 students will continue to develop their reading fluency by participating in daily Paired Reading. This is an excellent way for our students to strengthen their fluency skills and become more independent readers. They will continue to explore the purpose and features of a range of texts including; narratives, information texts and persuasive texts. They will create their own texts using their growing knowledge of the correct vocabulary, text structure and features of each of these texts. Tasks and activities will have a special emphasis on vocabulary relevant to our Term 2 Topic 'Paddock to Plate'.

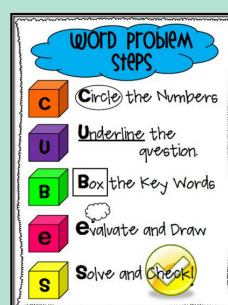
Numeracy

In Number, Year 2 students will begin to apply their place-value understandings when solving equations and worded problems using the operations, addition and subtraction. Students will learn various strategies such as counting on, counting back, doubles and near doubles facts, friends of ten and number bonds; as well as learning which concrete materials will help them to solve problems. In Space, Year 2 students will also explore how to recognise, compare and classify shapes, referencing the number of sides and using spatial terms such as 'opposite', 'parallel', 'curved' and 'straight'.



Junior General Expectations

- Students can enter their classroom from 8.35am to organise their learning materials.
- Students are to arrive on time everyday wearing full school uniforms.
- Students aim for 100% attendance, unless unwell.
- Parents and caregivers remain outside the Junior Learning Centre (BER) until the bell goes at 3.15pm as the centre is used as a learning space.
- Students are required to wear a school hat from September 1 to April 30 at morning recess, lunch breaks, during PE and Junior School sport as part of our Sunsmart Policy.
- Communication with teachers; appointments can be made or messages sent through Sentral, parents can see teachers each day outside of learning time (between 8.35-8.45am or after 3.15pm) or call and leave a message and teachers will return your call as soon as they can.
- Students always do their personal best with their learning.



MIDDLES - TERM 2 OVERVIEW

Welcome back to Term 2, 2025! We hope your break was filled with rest and special moments with family and friends. We're looking forward to a term full of curiosity, creativity and connection as we continue learning and growing together.

NUMERACY

NUMERACY: Students will continue to build their knowledge and skills of addition and subtraction, focussing on strategies and ways to manipulate numbers to solve equations and worded problems. We encourage students to further investigate multiplication fact families (times tables) at home which will improve their ability to automatically recall these facts quickly and support their learning efforts in the classroom.

This term, students will explore angles and shapes through engaging, hands-on activities. They will learn to identify and compare different types of angles, such as acute, obtuse, straight and reflex and understand how these relate to right angles. Students will also learn to describe and compare the features of 2D shapes (like triangles and rectangles) and 3D objects (like cubes and pyramids), looking at properties such as sides, angles, faces, and edges.

ENGLISH

ENGLISH: In reading, students will be identifying the purpose, features, structure and intended audience of information reports. They will learn to use 'beyond the text' comprehension strategies (predicting, synthesising, inferring, visualising, analysing and critiquing) and 'within the text' strategies (monitoring meaning, adjusting tone, using expression, self questioning and searching for information) to assist them in understanding what they are reading. Students will identify the effects visual elements (illustrations, photos, fonts) have on an audience.

In writing, students will be planning, drafting and publishing information texts. They will explore how different text features: headings, subheadings, images, maps etc inform and engage the reader. They will learn to use a variety of connectives and openers to provide better links between their ideas, as well as using paragraphs to assist in the organisation of their writing. Students will continue developing their understanding of simple, compound and complex sentences where they will be encouraged to explore a range of punctuation and use word anchor charts to improve their vocabulary (adverbs and adjectives).

TOPIC

TOPIC: Geography: Australia as States and Territories and our Neighbours

This term students will be further exploring the map of the world and their understanding of place through examining the major characteristics of Australia and Australia's neighbouring countries. The concept of place is developed by examining the similarities and differences between places within and outside Australia. Students will use geographical tools, such as a globe, wall map or electronic atlas, to locate the states and territories, major cities and regional centres in their own state, and then naming them. They will also investigate climates and types of natural vegetation and the significance of vegetation to the environment.



Our classrooms are open from 8:35am each morning for students to get themselves organised so learning time can start promptly at 8:45am.

There is an expectation for students to read for at least 20 minutes a day, 5 times a week and fill out their reading journal. They should be practising their spelling words daily as well as their multiplication facts.

Ms Heeley
Mr Leslie
Ms Gianna

M5
M6
M23

Ms Niambh
Ms Jess

M20
M22



Well Term 1 flew by in the blink of an eye and here we are in Term 2! Students have all settled into the senior school and have demonstrated our Kingsley values amazingly well to the wider school community, and we couldn't be more proud of them.

Classrooms open at 8:35am each morning for students to organise themselves for the day so that learning time can start promptly at 8:45am. The ramp works, which impeded access during Term 1, have now been completed and S3 and S4 students are able to access their classroom from their external classroom doors.

We love it when our students are ready for their learning, and this means coming to school daily on time and with a fully charged iPad. Students are required to turn off all notifications on their device and place it in the lockable cabinet in the classroom. Mobile phones need to be handed to their classroom teacher and will be returned at the end of the day.

Please remember to bring some fruit or veg for fruit break, snack, lunch and a water bottle each day. Our wide brimmed school sunsmart hats are required for the first two weeks of this term, so please don't forget to bring those in.

SENIORS TERM 2 OVERVIEW



ENGLISH

The literacy focus this term is developing and improving reading and comprehension strategies as well as deep diving into author's purpose, point of view and how word choice can define an author's style, as well as help the reader visualise and infer. Students will be completing a novel study of "A Bridge to Terabithia" where they will focus on different literary elements each week. After our novel study, we will watch the movie to consolidate the learning and to celebrate our end of term. Students are encouraged to read nightly and to log their reading in their 2025 diaries. Teachers will collect student's diaries once a week to monitor their reading nights.

For writing, students will be looking at informative texts through the lens of biographies before moving back into narrative writing. Students will continue to build on the structure, language and conventions of writing. They will practise revising, editing and publishing their work. Our spelling lessons will begin this term focusing on the spelling rules for particular sounds starting with the long 'a' sound. Students will have access to these words in their Google Classroom should they wish to practise them at home, however, we will also be doing daily revision of their words in class.

MATHS

In Mathematics, we will be moving into Units of Measurement looking at length, mass, volume, capacity as well as angles. Through our investigation and problem solving lessons we will look at area and perimeter and how we can use problem solving strategies to think outside the square to find the answer. This term will see some of our students participate in the Maths Olympiad, a high level maths competition that involves problem solving skills, reasoning and requires a lot of resilience.



WELLBEING FOCUS & TOPIC

The topic for Term 2 is 'Health - looking after ourselves and others'. This will involve students looking at the way the brain changes during puberty, as a way for them to understand their emotional changes and the various areas of their mental health during these formative years. They will learn about ways to manage their emotions and understand those of others. We will end the term with our 'Living & Growing Program' incursion that teaches the students about the physical changes that occur in both males and females during puberty.

SPECIAL EVENTS

24th April - ANZAC Day Ceremony

1st May - Yr 3 - Yr 6 Cross Country at Robinson's Reserve (rescheduled from Term 1)

5th May - School photos
8th May - District Girls Footy Gala Day

9th May - Mother's Day Assembly and Open Morning

15th May - Frankston Youth Group visiting our Yr 6's

22nd May - Frankston Youth Group visiting our Yr 6's

23rd May - Curriculum Day

5th June - Frankston Youth Group visiting our Yr 6's

9th June - King's Birthday Public Holiday

27th June - Winter Lightning Prem (venues to be confirmed)

4th July - SEA Incursion - Puberty and Consent incursion and the last day of term

SENIOR SPORT

Our students will have the opportunity to participate in a variety of games, activities and sports this term including:

- Senior Sport on Friday mornings
- 3 - 6 Cross Country (rescheduled from Term 1)
- Girls Footy Gala
- Winter Lightning Premiership Sport Training which includes: Soccer, Netball, AFL and Tee Ball



SENIOR TEACHING TEAM

Ms Jamie Wittingslow (S1)

Mr Brent Schuster (S3)

Ms Elle Sullivan (S2)

Mr Kieron Quick (S4)



We hope our children who celebrated an April birthday in the holidays had the very best day!

April 1st Zava P (P16) Drew B (S2)	April 7th Amelia G (J10) Josh D (M23)	April 15th Adelaide M (M20)	April 27th Savarna B (J11)
April 2nd Harlow H (J9)	April 10th Alina K (J9)	April 22nd Bailey C (M20)	April 30th Cristal T (P18) Marshall L (M22)
April 3rd Ryzin M (J8)	April 11th Elih J (M6) Ella H (M20) Harper D (M23)	April 23rd Frankie B (J10)	
April 4th Blair PP (P16) Kassidy Mc (S4)		April 24th Ilah-Rose K (J8) Pa L (J12) Alex C (S2)	



Every Day Counts The importance of regular school attendance.

At Kingsley Park Primary School, we prioritise regular school attendance.

Our preps so far this year have done an amazing job with regular attendance and are currently our stand out year.

In Term 1, 180 of our students attended school for between 98% to 100% which is an outstanding achievement. Some went over this just by having a few late arrivals.

Keeping in mind, that when students are unwell, they do need to remain home and we thank our parents for doing just that. Some students also suffer from School Can't and still do their best to give each day a go and arrive on time.

If your child is struggling for any reason and does not wish to attend school, please, please have a chat with your child's classroom teacher as soon as you can. The sooner the better so we can help work out if there are any problems or concerns. We will work with families to ensure students are in class with their peers and teachers and enjoying all the benefits that brings.

Attending school every day means experiencing what counts – the learning, friendship, fun and opportunities that can shape your child's future.

Last term, students at our school missed on average 2 days of school which is a great effort for so many. Sadly, the late arrivals to school did creep up towards the end of term.

Please remember, Literacy learning occurs in the first session, every minute missed can mean missing vital foundation concepts needed to build bigger concepts and higher levels of learning. Lets make every effort to **Beat the Bell!**

We understand that there are times when your child will need to miss school but to ensure minimal disruption to their education, please consider scheduling family holidays or medical/dental appointments outside of school time. If your child is well enough to attend but is worried about friendships, schoolwork or tests, please encourage them to come to school. Avoiding school can make these feelings worse and can create a negative pattern of behaviour.

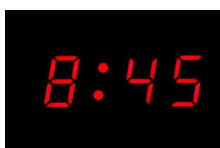
If your child is having difficulty attending school, talk to their teacher about getting support.

We know that parents and carers can be juggling challenges daily to get your children to school. If your child must miss school, notify us as soon as possible via Sentral or a phone call to the school so we can work together to support them.

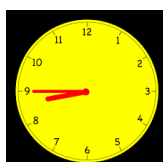
Remember, Every Day Counts.



Attending school every day means experiencing what counts – the learning, friendships, fun and opportunities that can shape their future.



BEAT THE BELL!
ARRIVE BEFORE 8:45 TO BE ON
TIME FOR LEARNING.





Smile Squad return this term.
If your child has not yet visited the team and you have completed the forms, they will be seen in the first weeks of term.

Smile Squad are with us for the first 2 weeks of Term 2.






1300 035 000

www.teamkids.com.au






RITCHIES IGA + LIQUOR



NOMINATE US TODAY

AS PART OF THE RITCHIES COMMUNITY BENEFIT PROGRAM


and help us generate extra funds.

- 1 Download or update the Ritchies Card App


- 2 Search and select our name when prompted to nominate a club, school or charity
- 3 Every time you shop at Ritchies and scan your app or card, Ritchies will contribute a percentage of the total to us*




*CONDITIONS APPLY. Go to ritchies.com.au/loyalty for further information.


RITCHIES IGA + LIQUOR






RITCHIES CARD WELCOME OFFER



- 1 Join and activate your Ritchies Card or App.
- 2 Visit a store within 14 days, spend \$100* or more in a single transaction and scan your Ritchies Card or App.
- 3 **Get \$10 off instantly.** Valid for one transaction.



Download the Ritchies Card App and select the club, school or charity that you wish to support.





FREE CHAMPS

6 Week After School Program Frankston Area

**FREE
PROGRAM
FOR
CHILDREN
8-12YRS**

**TUESDAY AFTERNOONS TERM 2
4:00PM-5:30PM**

CHAMPS is a support program for children from families where a parent or carer faces mental health challenges.

It's all about learning and connecting through fun activities and supported conversations.

FOOD/SNACKS Provided

BOOKINGS ESSENTIAL

**Scan QR Code to
register
your interest**



**Applicants will be
contacted for more
details**



**Peninsula
Health**

**Families, Parenting and Mental
Health (FaPMH)**

THE KINGSLEY PARENTS GROUP (KPG)

The Kingsley Parents Group (KPG) is a very important group within our community. Interested parents, carers, grandparents and friends try to meet once each month and are always welcoming new friends to join.

The KPG are a communication link between the community as a whole and the school.

The KPG is a social body, bringing together the parents of the school in social activities, to connect and chat and get to know familiar faces.

The KPG has a fundraising role. Under its umbrella comes various fundraising opportunities and activities such as Easter Raffles, Mother's Day and Father's Day stalls and of course the ever popular sausage sizzles!

**Please consider volunteering, because
without you there is no KP Group
..... but with you,
we can all achieve so much!**



2025

Why should I volunteer ?

- It's a great way to meet other parents or catch up with a friend!
- Your child will LOVE seeing you involved at school and as part of all the exciting events we have!
- You will be demonstrating to your child that you value their school, education and community – a key ingredient for student success!
- Great role modelling for your child – there is always time to help out!
- Volunteering is great for your mind and body (google it!) and gives you a warm fuzzy feeling!

Please contact the school office if you would like to know more!