

Kingsley Park Primary School

Respect ~ Excellence ~ Resilience ~ Co-Operation ~ Community



WELCOME BACK TO SCHOOL KINGSLEY KIDS AND FAMILIES SCHOOL NEWSLETTER - THURSDAY 6TH FEBRUARY 2025

CLASSROOM & SPECIALIST TEACHERS 2025



P16 - Mrs Hayleigh Dunn
P17 - Mrs Bree Brown
P18 - Miss Alysha Mayne
J8 (Year 1) - Mr Scott Gardner
J9 (Year 1) - Miss Mikkea Denniston-Spaull
J10 (Year 1) - Miss Sommer Shaw & Mr Seamus Thomson
J11 (Year 2) - Mrs Sarah McDonald (Mon/Tues) &
Mrs Lynda Cameron (Weds/Thurs/Friday)
J12 (Year 2) - Miss Nicole Pearson
J13 (Year 2) - Miss Jo Coppock
M5 (Year 3) - Mrs Leonie Heeley
M6 (Year 3) - Mr Paul Leslie
M20 (Year 4) - Miss Niambh O'Reilly
M22 (Year 4) - Miss Jess Lancaster
M23 (Year 4) - Miss Gianna Salerni
S3 (Year 5) - Mr Brent Schuster
S4 (Year 5) - Mr Kieron Quick
S1 (Year 6) - Mrs Jamie Wittingslow
S2 (Year 6) - Mrs Elle Sullivan

Phys Ed - Miss Hannah Wight
AUSLAN - Mrs Jessie Sinclair
Visual Arts - Mrs Lauren Charlton
Performing Arts - Mrs Mai Stodden
STEM & Science P-2 - Mrs Kellie Fillis
STEM & Science 3-6 - Mrs Yvonne Reed

Curriculum Learning Specialist: Mrs Kate Cox
Inclusion & Wellbeing Learning Specialist:
Mrs Sarah Brand

Principal: Ms Gill Gray
Assistant Principal: Mr Matt Brand

Business Manager: Mrs Janine Coe
Office/Admin: Ros Carlton & Jo Toombs



Be Kind – Be Safe – Be a Learner = a great Kingsley Kid

Welcome back and welcome to all our new families.

What a fabulous start to the year we have had, congratulations to all. Week 1, although only 3 days saw outstanding attendance. Well done to all. The hot weather certainly impacted this, we know many students would have struggled to get a good nights sleep and get up for learning on Monday, a very well done to all who did. So far, our preps are leading the way with amazing attendance and punctuality, keep up the great work.

We would like to welcome our families in for a Parents as Partners afternoon/evening on Wednesday 26th February between 3:30pm and 6:50pm or Thursday 27th February 3:30pm -4:20pm. As part of our formal communication processes with parents, we will be having 'Getting to Know You' 10 minute interviews for families with students in all year levels. These will give you the chance to get to know your child's teacher and discuss how they have settled into their new year while passing on any important information. Parents of students who have SSGs in the term are not required to book. We look forward to seeing you all on this night. Booking details will be out soon.

We do apologise for starting the year as a construction zone. We have ramp works underway that were expected to be further along than they currently are. Most will be completed within two weeks and those areas cleared. The biggest one which is the indoor ramp in the main building will take until the end of term as the initial design is still under review. we will keep you updated and thank you for your understanding. Please be safe while walking to access your child's classroom, as several paths are impacted by the works.

We look forward to a terrific 2025 school year. As always, if you have any thoughts to help us improve, or simply a note of feedback, please send an email to us at kingsley.park.ps@education.vic.gov.au with the heading Feedback.

Take care & stay safe.

Gill Gray
Principal

SIBLING ENROLMENTS

We are enrolling our siblings now for Prep 2026

We ask all families who have a child starting Prep in 2026 to complete an enrolment form as soon as possible and hand it to the office for processing. We are receiving new family enquiries already, and want to ensure our current families are enrolled as soon as we can.

All Sibling Prep 2026 enrolments are due to the office by the end of February, 2025. Please ring the office on 9789 0077 if you have any queries about enrolment. Tour dates can be found on the last page of this newsletter on our Prep 2026 flyer.





Parking in Franciscan Avenue

Please take note of the parking arrangements in Franciscan Avenue. Bays for parking are clearly marked. Remember the front section is our 'Kiss and Go' zone - parents are not to leave their cars in this zone, it has a **2 minute limit**. The staff car park is for staff only and must not be used as a drop off or pick up point by any parents. These arrangements, together with the 40kph speed limits, have been put in place to protect all children. Unfortunately children do not have the same road sense or skills as adults and everyone needs to be careful around the school. Of particular concern are people doing U turns adjacent to the crossings. This is extremely dangerous and illegal. Please show your care for all our students and drive slowly and observe all road rules. We do not want an child injured. I would also like to remind the school community of the importance of road safety around schools. School Speed Zones will be enforced from the commencement of the school year.

Valuable Items

Personal property is often brought to school by students, staff and visitors. This can include mobile phones, calculators, toys, sporting equipment and cars parked on school premises. As the Department does not hold insurance for personal property brought to schools and has no capacity to pay for any loss or damage to such property students and staff are discouraged from bringing any unnecessary or particularly valuable items to school. All items are brought to school entirely at the owner's own risk.

Children being collected by another adult

If your child is to be collected by another adult we need to be contacted or notified in writing of the arrangement. Please send a note explaining the arrangements or call the office if this is a one day event.

Food allergies

Please be sensitive to the needs of allergic and anaphylactic children in our school. They may suffer severe and sometimes life threatening reactions to certain foods eg. peanuts and eggs or items e.g., latex. Please be mindful of this when thinking of what is included in your child's lunch box or class celebration food. It is a huge help to our management of this safety issue. If your child has any allergies, please ensure the school is aware.



See page 4 for more details



Some important reminders as our children return or begin school for 2025

School hats must be worn

A reminder, all students must have their navy blue broad-brimmed hat for school each day. No hat means no outside play or outside sports activities from September to May. Students are directed to the shaded area near the Prep/Junior playground.

Uniform Policy

A uniform dress code reinforces in students a pride in their appearance, instils recognition of themselves as an integral part of the school community, and assists in developing pride in representing their school. Issues of equality, health and safety, and expense are also factors that contribute to the establishment of the Dress Code at Kingsley Park. School Council has developed the Uniform Policy which can be found on our school website. It is an expectation that all students wear full school uniform on a daily basis. Arrangements can be made for families experiencing financial hardship, they should contact the school office to discuss this. This policy is available on our school web site and is being reviewed this year. If you have any feedback or input, please share this with us at kingsley.park.ps@education.vic.gov.au.

Mobile Phones

Please note that children are NOT to use mobile phones whilst at school. Once students enter the school grounds, mobile phones must be turned off and handed to the classroom teacher where they are locked in a cabinet and returned at the end of the day as per the Department of Education Mobile Phone Policy for all schools. If you need to contact your child at any time, parents are to call the school office on 9789 0077 and we will ensure your child receives the message. Students are also not to message parents using their iPads or any device during the school day, this is a breach of our Internet and Acceptable Usage Agreements. All messages must come through the office. There is a mobile phone policy for all government schools in place. The policy means phones brought to school must be switched off and stored securely during the school day. The aim of this policy is to provide:

- a safe environment to learn without inappropriate mobile phone use (including cyberbullying) or distractions
- greater opportunities for social interaction and physical activity during recess and lunchtimes.

The policy can be found on our school website.

Art Smocks

Thank you to all those children who have brought their named art smocks to school already. Each child participating in Art (In Semester 1 this is Middle and Senior students) must have their own Art smock to wear. Please check that your child has one and that their name is clearly visible on it.

Skateboards, Scooters and Bicycles

Scooters and skateboards are brought to school entirely at the owner's risk. They are to be left in the locked enclosure. No one is to ride scooters or bicycles in the school grounds at any time during term. All riders must wear a helmet.

Extreme Heat

We are very fortunate that all of our classrooms have air conditioning and purifiers. On days of extreme weather we may call a hot day timetable where children have reduced time out in the yard or are kept inside but we will never send children home due to the heat. Although at times, some air conditioning struggles, we may move classes to cooler rooms as needed. Hot days are not an excuse for absenteeism.

Before & After School Supervision



Student safety at Kingsley Park Primary School is our highest priority and the safe and appropriate supervision of students is an important element of our duty of care to students. Part of this duty is ensuring parents and students are aware of our student supervision arrangements before and after school.

Before school: School grounds are supervised from 8:35am. Classroom doors also open at this time for students to come in and prepare for their learning day which commences at 8:45am. No students are to be on-site prior to 8:35am unless supervised by a parent.

After school: School grounds are supervised until 3:30pm.

Students on school grounds outside these times will not be supervised (unless they are attending a before or after school care program or supervised extracurricular activity).

Parents/carers are requested to ensure that students do not attend school outside of these supervised times unless they are attending before or after school care, or a pre-arranged supervised activity (i.e. sports practice).

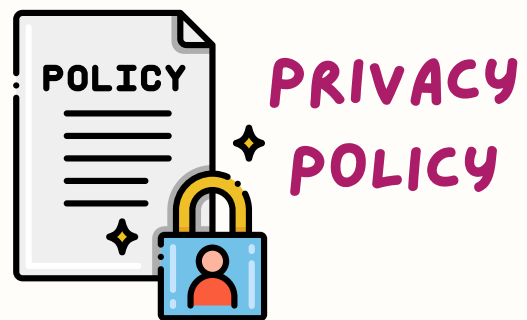
Families are encouraged to contact the school office on 9789 0077 or refer to [Team Kids OSHC](#) for more information about the before and after school care facilities available to our school community or if you would like any further information about our student supervision arrangements.

For a copy of our school's Yard Duty and Supervision Policy, parents/carers should contact the school directly.



Children's Safety – No Dogs In School Grounds

Dogs are not permitted in the school grounds. This covers all dogs including trained dogs on a lead with an adult. While a life long owner of dogs and, as someone who fully agrees that “dogs are a person’s best friend” the fact remains that even the best trained and seemingly passive dogs can become frightened and overreact in a school setting when faced with a large number of enthusiastic and loud children. We have had children bitten in the past which is not only unfortunate for the injured child but is an action which can have very serious consequences for the owner of the dog and for the dog itself. We will be putting up notices near all entry gates to remind the community. School known therapy dogs and guide dogs wearing their appropriate identifying tags, are an exception.



Our school collects, uses, discloses and stores student and parent personal information for standard school functions or where permitted by law, as stated in the Schools' Privacy Policy. For more information about privacy, see: Schools' Privacy Policy – information for parents. This information also available in nine community languages. <https://www.education.vic.gov.au/Pages/schoolsprivacypolicy.aspx>



FOOD ALLERGIES – How can you help ?

You may or may not be aware, we have children in our school that have severe food or other allergies and confirmed diagnoses of anaphylaxis towards some products. We would like to make our school as allergy aware as possible to reduce the risk of accidental exposure. Anaphylaxis is a severe, rapidly progressing allergic reaction that is potentially life threatening. The most common allergens in school aged children are peanuts, eggs, tree nuts (e.g. cashews), cow's milk, fish and shellfish, wheat, soy, sesame, latex, certain insect stings and medication.

Department of Education advice on the banning of food or other products is not recommended due to the possibility of encouraging complacency among staff and students, the presence of hidden allergens and the difficulty of monitoring and enforcing a ban. At Kingsley Park Primary School the focus will be placed on raising awareness of the risks associated with anaphylaxis, and to implement practical, age-appropriate strategies to minimize exposure to known allergens.



Always take Food Allergies SERIOUSLY

If a Schoolmate who has food or insect allergies is showing these Signs and Symptoms, tell a teacher or person in charge immediately.

Here are some signs & symptoms:

- Skin that's itchy, red or itchy.
- Swelling of the face, lips and eyes.
- Vomiting.
- Finding it hard to breathe.

It could be an allergic reaction. Your quick action could save a life!

BE A REAL MATE
For more information about allergies contact:
Allergy & Anaphylaxis Australia
1300 728 000
allergyfacts.org.au

Be a Mate
Making Allergy Treatment Easier

The key to prevention of anaphylaxis at Kingsley Park Primary School is knowledge of those students who have been diagnosed at risk, awareness of triggers (allergens), and prevention of exposure to these triggers. Partnerships between Kingsley Park Primary School and parents are important in ensuring that certain foods or items are kept away from the student while at school.

To help keep the classrooms safe it would be greatly appreciated if you could be mindful when sending foods that contain these products to school with your child and ensuring you are having discussions at home with your child supporting our no sharing of food rule at school.

All parents are asked to advise their classroom teacher in advance of sending in food to celebrate a child's birthday or other special occasion. I encourage you to consider non-food items for some of these events so that all children may participate in the fun.

We also have a student who is allergic to latex so please do avoid sending toys or items into school that contain latex.

Further tips can be found on the 'Be A Mate' allergy steps poster.



How to help keep SCHOOLMATES who have FOOD ALLERGIES safe

- 1 Don't share your food with your mates that have food allergy.
- 2 Always wash your hands after eating.
- 3 Know what your friends are allergic to.
- 4 If a schoolmate who has food allergies becomes sick, get help straight away! (even if they don't want you to!)

Tips

If you have any questions, please feel free to contact your child's teacher or Ros in the office. Your cooperation and understanding in this matter is greatly appreciated.

This school office is open from 8:30am until 4.00pm,
Monday to Friday for general enquires.

SCHOOL HOURS

School gates and classrooms are open from 8.35am.
Learning time begins at 8.45am sharp.

Recess: 10.45am – 11.15am
Learning Time: 11.15am-1.15pm

Lunch Eating 1.15pm and
outside lunch play 1.30-2.15pm

Learning Time 2.15pm-3.15pm (end of school)

Final Bell: 3.30pm (any students who have not been
collected are to come to the school office.

School gates are locked at 3.30pm

Parents are welcome to stay in the play areas with
their children playing, please be mindful the only way
to leave the school is via Gattinara Drive side of the
school due to the locked gates.



FINANCIAL ASSISTANCE: CAMPS, SPORTS, EXCURSIONS FUNDING (CSEF) FOR 2025

Parents with Health Care Cards/Pensions Cards can apply for CSEF.
If you applied for CSEF at Kingsley Park Primary School in 2024, you
do not need to reapply in 2025 unless:

- you have another child starting school i.e. Prep
- you have moved to our school during the year.
- you applied at another school in 2024.
- you have recently been issued a Health Care/Pension Card

Any parents who hold a Health Care Card/Pension Card and did not
apply/receive CSEF through our school last year, please obtain a
form from the office for CSEF funding in 2025. The annual CSEF
amount is \$150 per Primary School Student



Attendance Matters

Every student. Every day.

Late Arrival Early Release

LATE ARRIVAL & EARLY LEAVE

Students arriving to school after 8.45am must
be signed in by a parent/guardian via the
school office. Any student arriving to school
late without a parent will be marked
as an unexplained lateness on their
attendance record.

All absences require a valid explanation
from parents/guardians.



STATE
SCHOOLS'
RELIEF

Glasses for Kids Program 2025

This week, all children in Prep to Year 3 will bring home information on the Glasses for Kids Program. This program provides free vision screening and, if needed, further testing and free glasses to participating Prep to Year 3 students. State Schools Relief are proud to be partnered with this program.

Parents/Carers are asked to;

- **Read the information brochure provided**
- **Complete the consent form and questionnaire**
- **Return completed forms to the school by Monday 10th February**

Parents/carers are under no obligation to access this service, however we would encourage all children to participate.

Should glasses be required by your child, these are selected from the range provided by State Schools Relief, with no need for you to have a prescription filled elsewhere.

It's also important to note, that should your child already wear glasses, they can still access this program. If their glasses are less than 12 months old, a copy of their latest prescription (if available) would be beneficial to the visiting optometrist.

The on-site visual assessments will be completed on March 17th, 18th and 19th.

IMPORTANT DATES

Wednesday 12th February

Prep individual assessment day.

Wednesday 19th February

Prep individual assessment day.

Monday 24th February

Junior Swimming (24/2 - 28/2)

Wednesday 26th February

Prep individual assessment day.

Monday 10th March

Labour Day Public Holiday

Wednesday 12th March

NAPLAN

Commences 13th March - 24th March

Monday 17th March - Wednesday 19th March

Glasses for School Program (Prep - Year 2)

Wednesday 19th March

Courage to Care (Year 6)

Friday 28th March

Summer Lightning Prem (Seniors)

Monday 31st March

Middle Swimming (31/3 - 4/4)

Friday 4th April

Last Day of Term 1 - 2.30pm finish



SCHOOL PHOTOS 2025

Monday 5th May

MEDICATION AT SCHOOL

Current Families : Please ensure you have returned required medication to the school if you have yet to do so. Also complete a new medication form if dosage or medication has changed.

If you are new to Kingsley Park in 2025 and your child requires regular medication, please come to the school office after your child has settled into the classroom. We will assist with relevant forms and run through the process.



SCHOOL CANTEEN

Leigh will return to the school canteen in 2024.

The canteen will be open on Monday & Friday weekly

The first day for canteen in Term 1 is Monday 3rd February.

If you would like to volunteer to assist in the canteen, please contact Leigh on 0407823799.

All canteen orders are processed via the QKR! App.



Please ensure your QKR App is updated with your child's 2025 class.

Term Dates 2025

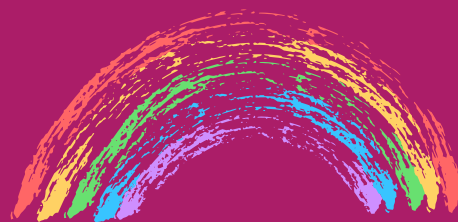
Term 1: 28th January
(students commence 29th January, Preps 30th January)
- 4th April
Term 2: 22nd April - 4th July
Term 3: 21st July - 19th September
Term 4: 6th October - 19th December



Be Kind – Be Safe – Be a Learner



Don't forget your
blue broad-brimmed school sun smart hat and please
remember to name it!



Welcome to Prep! We have had such a successful start to the year with students settling into school quickly. Students are separating from their parents beautifully and we are proud of how happy they are to be at school. Their attendance to date has been exceptional, well done.

Literacy

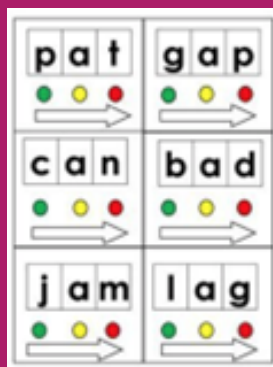
This term we have a heavy focus on phonics- learning the most common sounds the letters of the alphabet make. We will be learning 3 sounds a week and will learn to blend these sounds together to make small words (eg. b-i-g = big). The students are beginning to explore books and will be starting to track the words with their finger, recognise letters, sight words and different pictures within the texts we read. Using this information they will begin to understand that texts can tell us different stories and information.

During writing sessions, students are practising writing their name, starting with a capital letter, followed by lowercase letters and using appropriate pencil grip. We will be learning how to form the shapes that make our letters using the Hartley Knows handwriting program and will begin to form letters later in the term.

Numeracy

This term in Numeracy, students are working on counting forwards to and backwards from 10 with organised 1-to-1 correspondence. They will also partition and combine numbers up to 10. In Maths, we will spend time learning about and making patterns using colours and various two-dimensional shapes.

The Preps will also work with Mrs. Fillis to explore concepts of measurement, including lighter and heavier, longer and shorter and full and empty.



Topic: Getting Along

As the Preps settle into their new school environment, we are focusing on learning different social skills to assist them with play out in the yard and when working with others in the classroom. We will learn about identifying and correctly managing different emotions using the Zones of Regulation and the Resilience, Rights and Respectful Relationships program.

How can I support my child's learning at home?

Read aloud to your child: Before we begin to send home our take home books, we encourage parents/carers to read with their child regularly.

Take Home Reading: Around Week 6, we will have introduced the sounds that the letters 'SATPIN' make and we will therefore be sending all students home with a decodable book. These books will include small words using the 'SATPIN' letters. Encourage your child to sound these out as they begin to read. At this time, we will also be sending home more specific ways to support your child to read at home.

Ask students about what letter they learnt about at school: Ask your child to say the phonics rhyme that goes with that letter, the sound it makes, what the letter looks like in upper and lower case as well as starting to find these letters in their everyday environment.

We look forward to continuing a great first term in Prep. If you would like to contact us further please do so via phone or through the Sentral Parent portal.

Hayleigh, Bree and Alysha



Ms Hayleigh (P16)



Ms Bree (P17)



Miss Alysha (P18)

Juniors – Year 1

Term 1 Overview

J8–J9–J10

Welcome to Term 1 2025. We are looking forward to a successful, productive and exciting year.

Literacy

In Phonics and Spelling, the Year 1's will revise the sounds they learned in Prep and be introduced to consonant digraphs (eg. sh, ch, ng, ph, wh) and hard/soft g and c sounds. Students will be exposed to these letter sounds through phonics activities and reading passages. The Year 1's will continue to practise identifying rhyming words and the parts of words (such as c-at, b-at, s-at). This provides the students with multiple opportunities to learn these letter-sound relationships in depth and in context.

In Reading the Year 1's will continue to develop their comprehension skills such as; making predictions, connections and inferences about a text as well as summarising a text. They will begin to identify parts of a simple sentence, such as what's happening, and who or what is involved. Students will also be exposed to a series of Narrative Texts that will support their vocabulary development.

In Writing this term, the Year 1's will continue to develop their independent writing skills by engaging in lessons that explore sentence structure through their personal recounts. They will use their knowledge of writing complete sentences to experiment with different text structures. They will begin to form short stories and recounts and use their knowledge of complete sentences within these.

Numeracy

In Term 1 of Year 1, our students will explore the exciting world of patterns! They'll be learning to find and continue patterns using numbers, shapes, and objects. By focusing on the part that repeats, students will begin to understand how recognising repetition can help solve problems in fun and engaging ways. Students will also work on building a strong understanding of numbers with the "I Can" goal: I can read, make, and order numbers to 120 and beyond using various materials. Through engaging activities like reading, creating, writing, and ordering numbers, as well as hands-on experiences with concrete materials, they'll develop their number sense. Students will practise counting forwards and backwards from 0 to 120 and continue skip counting by 10s, 5s, and 2s. Students will also explore data collection by gathering, sorting, and displaying information through surveys and observations, helping them make sense of the world around them in fun and interactive ways. We highly encourage parents to actively support their children in grasping the significance of numbers by incorporating them into everyday situations. Comparing quantities, visualising value and worth, and understanding concepts like bigger/smaller and greater than/less than are essential skills that can be reinforced through these daily interactions. Additionally, beyond whole number concepts, students are encouraged to practise quick addition and subtraction facts and apply mathematical skills in real-life scenarios. Examples include using small amounts of money during shopping, calculating change (when ready), and weighing items while cooking.

Problem-solving skills take centre stage as well, with students exploring various strategies, including the use of C.U.B.E.S., to tackle mathematical challenges. This holistic approach ensures a well-rounded mathematical foundation for our Year 1 students.



Mr Gardner (J8)



Miss Mikkea (J9)



Miss Sommer (J10)



Mr Thomson (J10)

Juniors – Year 2 Term 1 Overview

J11–J12–J13

Welcome to Term 1 2025. We are thrilled with how well the Year 2 students have settled in and are looking forward to another fantastic year. Congratulations to all on their attendance to date, we just need to work a little more on beating the bell time.



Ms MacDonald & Mrs Cameron

Literacy

In Phonics, the Year 2s will revise the sounds they have covered so far throughout their schooling and will revise consonant digraphs (e.g. th, ch, sh, ng). They will revise long vowels learnt in Year 1 and then move onto new sounds throughout the year. Students will be exposed to these letter sounds through spelling, phonics activities and their reading passages. Through the students' phonics activities, the Juniors will continue to practise counting syllables. Understanding syllables will help the students with their spelling as they can learn to chunk the spelling of different words using different spelling choices. Our Spelling program runs alongside our phonics program and each week, students will be given a range of spelling words that mirror our letter/sound phonics focus of the week.

In Reading in Term 1, the Year 2s will focus on reading habits and exploring a range of picture story books and some of our favourite authors. We will use our decodable books within the classroom to develop fluency and then move on to practising reading with fluency during Paired Reading and Speed Reading. Students will begin to look at some non-fiction texts that will accompany our Swimming program. They will also begin to explore and understand nouns, verbs, adjectives and adverbs and how these are used to make up different sentences.

In Writing this term, the Year 2s will continue to develop their writing skills by engaging in lessons that explore procedural texts. They will use their knowledge of writing complete sentences to experiment with different text structures. They will continue to form recounts and use their knowledge of complete sentences within these. Students will begin to uplevel their sentence writing by adding different interesting nouns, verbs, adjectives and adverbs, making their recounts more interesting.



Ms Pearson

Numeracy

In Term 1, Year 2 students will dive into the exciting world of place value, in particular, reading, making, writing and ordering numbers to 1000, including expanded form. Students will show an understanding of numbers by organising/partitioning them into thousands, hundreds, tens and ones. Students will consolidate their ability to count both forwards and backwards from 0-100, and will be introduced/continue to practise skip counting to 100 by 10s, 5s, 2s and 3s, starting from any number. They will also be looking at different number patterns and developing skills in understanding how to fill in missing numbers.

We encourage parents to support their children to understand the value of numbers by identifying them in everyday situations and comparing quantities. In the past, the Year 2 students have found skip counting by 3s the most challenging. If parents could please model skip counting by 3s in their everyday lives this will help to consolidate this learning.



Miss C

This will help students to visualise value and worth and concepts of bigger/smaller and greater than/less than. Students will also explore problem solving using the C.U.B.E.S strategy and learn to apply these problem solving skills to more complicated worded problems.

Juniors (Combined) Term 1 Overview

J8-J9_J10-J11-J12-J13

Junior Topic

This term our topic is focusing on Rights, Responsibilities and Respectful Relationships. We are looking at the school values and expectations and how we can best encompass these in our school lives. We are building strong connections between the students, teachers and community. The students will be exploring emotions, emotional triggers, acts of friendship and kindness, why we all need to act safely and will include our whole school focus on Harmony Day Tuesday 21st March, 2025.

Junior Take Home Learning

Home Activities in the Junior school include:

- Daily Reading (to begin week 3)
- Spelling (to begin later in the term)

Junior General Expectations

- Students can enter their classroom from 8.35am to organise their learning materials and be ready to learn.
- Students are to arrive on time everyday wearing full school uniform.
- Students aim for 100% attendance, unless unwell.
- Parents and caregivers remain outside the Junior Learning Centre (BER) until the bell goes at 3.15pm as the centre is used as a learning space.
- Students are required to wear a school hat from September 1 to April 30 at morning recess, lunch breaks, during PE and Junior School sport as part of our Sunsmart Policy.
- Communication with teachers; appointments can be made or messages sent through Sentral, parents can see teachers each day outside of learning time (between 8.35-8.45am or after 3.15pm) or call and leave a message and teachers will return your call as soon as they can.
- Students to always do their personal best with their learning.
- Students are expected to: Be Kind, Be Safe and be a Learner.

From the Year 1 Team:

Sommer Shaw (J8)

Mikkea Denniston-Spaull (J9)

Scott Gardner (J10)

The Year 2 Team:

Lynda Cameron and Sarah McDonald(J11)

Nicole Pearson (J12)

Jo Coppock (J13)

Learning
- IS -
FUN!



WELCOME TO 2025 MIDDLES!



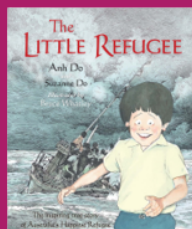
We are excited to welcome you to the Middles in 2025! This term, during our Wellbeing and Respectful Relationships lessons, we will continue to incorporate our school values: Respect, Community, Resilience, Excellence and Cooperation. Students will be developing their problem-solving skills, while Year 3 students will begin preparing for their NAPLAN assessments. We also look forward to our Water Safety Program later in the term at PARC swimming pool.

Curriculum

Reading:

In Term 1, students will work collaboratively in groups to ensure their learning needs are met. They will explore inspiring authors and engage with a variety of texts. Students will develop 'within the text' strategies such as monitoring and correcting, maintaining fluency, searching for and using information, and summarising. They will also demonstrate comprehension using 'beyond the text' strategies like making connections, predicting, inferring and visualising. During reading conferences, students will set individual goals with their teacher and work towards achieving them.

To support their learning, students should continue reading at home for at least 20 minutes, five days a week and explore a variety of texts for enjoyment. They will record their nightly reading in their reading journals, with milestones being celebrated—starting with the first milestone at 35 nights.



M5 - M6



Mrs Heeley



Mr Leslie

M20 - M22



Ms O'Reilly



Miss Jess

Writing:

This term, students will focus on sentence structure, learning about simple and compound sentences and the punctuation that supports them. They will craft narratives, incorporating characters, settings, events, problems, and solutions, while beginning to use paragraphs to structure their writing. Students will expand their vocabulary using word charts, exploring how adverbs and adjectives enhance their descriptions. They will also plan, draft and publish persuasive texts, using high modality words to strengthen their arguments, building upon persuasive techniques learned previously. Students will be encouraged to revise, edit and improve their writing, setting individual writing goals to guide their progress.

Students will engage in Spelling sessions to learn spelling patterns and rules, applying this knowledge in their writing.

Throughout the week, they will analyse words by segmenting sounds, identifying syllables and recognising letter patterns.

Spelling words will begin next week and be sent home on Mondays for daily practice, with a spelling test each Friday.

Numeracy:

This term, our focus will be on understanding place value, including renaming and regrouping numbers to aid in problem-solving. Students will explore odd and even numbers and identify, continue and create number patterns using multiples of 3, 4, 5, 6, 7, 8, and 9. As the term progresses, they will develop automatic recall of single-digit addition and subtraction facts and begin solving equations using all four operations.

To support learning at home, students should practise their times tables and quick addition and subtraction facts. Parents are encouraged to involve students in real-life maths situations, such as measuring ingredients for cooking or calculating change when shopping, to help reinforce the importance of maths in daily life.

Reminders:

● Our classrooms open at 8:35 am each morning for students to get organised, ensuring learning time begins promptly at 8:45 am.

● Please remember, "no hat, no play" this term.

● Students should bring a drink bottle, snack, lunch, and fruit each day.

● Reading and spelling homework is a whole school expectation.

All students are expected to: Be Respectful, Be Safe & Be a Learner.

We look forward to a fantastic term of learning and growth!

M23



Miss Gianna

M5 Mrs Heeley

M6 Mr Leslie

M23 Ms Gianna

M20 Ms Niambh

M22 Ms Jess

LEARNING EVERYDAY



SENIOR NEWS

S1 - S2 - S3 - S4

WELCOME TO TERM 1 SENIORS!

Students have settled very quickly into their new classrooms, caught up with their friends and are showing eagerness to progress with their learning goals which has been fantastic to see. We have some new faces in the teaching team in Senior school and students have enjoyed getting to know Mr Schuster and Ms Jamie.

This term, our Year 5s will be completing their NAPLAN assessments and we will have a strong focus on cybersafety, kindness (online and in person) and our 5 values of Respect, Resilience, Community, Excellence and Co-operation.

Classrooms open at 8:35am each morning for students to organise themselves for the day and so learning time can start promptly at 8:45am. There is still ongoing ramp works being completed outside the main building corridor and we ask students from S4 to enter their classrooms via the hallway after the 8.35am bell until further notice.

We love it when our students are ready for their learning, and this includes coming to school daily with a fully charged iPad. Students are required to turn off all notifications on their device and place it in the lockable cabinet in the classroom. Mobile phones need to be handed to their classroom teacher and will be returned at the end of the day.

Please remember sunsmart hats, fruit snack, snack, lunch and a water bottle each day.

ENGLISH

The literacy focus this term is developing and improving reading and comprehension strategies and understanding how texts vary in purpose, structure and language. Teachers will share their love of reading by reading a class novel by author David Walliams, who writes engaging and humorous stories. Students are encouraged to read nightly and to log their reading in their new 2025 diaries. Teachers will collect student's diaries once a week to monitor their reading nights.

Writing: Students will be explicitly taught how to write narrative and persuasive texts with a focus on the different text features used to engage the reader. Students will continue to build on the structure, language and conventions of writing. They will practise revising, editing and publishing their work. Our spelling lessons will begin with language conventions and then move through the spelling sounds. This means there will be no spelling homework in the first half of the term.

MATHS

In Mathematics, our main focus is to build skills, knowledge and confidence in fluency, understanding, reasoning and problem solving. Our focus in Number and Algebra is the place value system and the four operations. We will be exploring 3D objects and graphing using our Problem Solving strategies.

WELLBEING FOCUS & TOPIC

In term 1 we will focus on building relationships, exploring our values and understanding what it means to Be Safe, Be Respectful and Be a Learner. We will also be learning about 'Our Global Community' and exploring the UN's Global Goals.

SENIOR SPORT

Our students will have the opportunity to participate in a variety of games, activities and sports this term including:

- Senior Sport on Friday mornings
- Summer Lightning Premiership Sport Training which includes Basketball, Softball, Volleystars and Cricket.

SPECIAL EVENTS

11 February: Safer Internet Day
25 February: District Swimming (for those attending)
10 March: Labour Day Holiday
12 - 21 March: Naplan Period (Year 5)
19 March: Courage to Care (Year 6)
28 March: Summer Lightning Premiership
4 April: Last day of Term 1 - 2.30pm finish

SENIOR TEACHING TEAM

Ms Jamie Wittingslow (S1) Mr Brent Schuster (S3)
Ms Elle Sullivan (S2) Mr Kieron Quick (S4)



Ms Jamie



Ms Elle



Mr Quick



Mr S



SPECIALIST CLASSES - Term 1

STEM/SCIENCE 3-6 (Ms Reed) P-2 (Mrs Fillis)

Performing Arts (Mrs Stodden)

AUSLAN (Miss Jessie)

Phys Ed & Sport (Miss Wight)

Visual Arts (Mrs Charlton)



VISUAL ARTS (Mrs Charlton)

Welcome back everyone! I'm so excited to have the Kingsley Kids back in the art room in 2025. This semester the Middle and Senior students will participate in Visual Arts lessons.

*The Preps and Juniors will have Visual Arts in Semester 2, but can come to Art Club on Tuesdays at lunch time 1:45-2:15 starting Week 3.

Middles:

During Term 1 the Middles will explore painting and drawing skills with mediums including pencil, ink and paint. They will look at the artworks of Andy Warhol and Pablo Picasso as inspiration for their own portraits. Students in the Middles will learn colour theory of analogous colours and how line defines space. Students will select ways to exhibit their work with an audience in mind.

Seniors:

In Visual Arts in Term 1 the Seniors will also develop drawing and painting skills with a focus on portraiture. They will look at the Archibald Prize finalists and choose two artworks to compare and contrast.

Senior students will focus on self portraiture for their own artwork where they will learn the proportions of the face and explore the art elements of value and form. They will consider how best to exhibit their work to the wider school community to showcase their learning in the Visual Arts.

*To ensure proper protection of uniforms, we ask that the students bring in a named art smock or similar which will be kept at school and brought to each art lesson.

Let's get creative! - Mrs Charlton



SPECIALIST CLASSES - Term 1

STEM/SCIENCE 3-6 (Ms Reed) P-2 (Mrs Fillis)

Performing Arts (Mrs Stodden)

AUSLAN (Miss Jessie)

Phys Ed & Sport (Miss Wight)

Visual Arts (Mrs Charlton)

STEM Years 3-6 (Ms Reed)



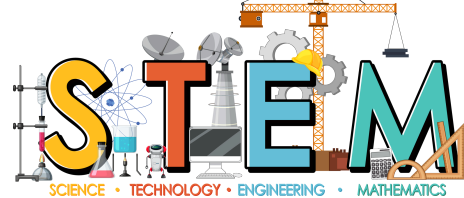
STEM-SCIENCE Term 1

During Term 1 Students in years 3 and 4 will be enquiring about "How the earth changes due to human movement and natural elements such as wind, water and temperature". Students will be examining different soil types, defining different weathers and erosion. They will be examining how rocks are formed and of how different minerals are formed in rocks.

Students in years 5 and 6 will be enquiring about "How the look of the earth can change by Mother Nature and extreme weather conditions such as droughts or snow blizzards" Students will be investigating the different types of extreme weather, volcanoes, earthquakes and tsunamis.

SCIENCE

PREP & JUNIOR STEM (Mrs Fillis)



PREP STEM - Term 1, 2025: Mrs Kellie Fillis

In Term 1, the Foundation students will use fairy tales to explore mini STEM projects where they will use everyday items to construct towers, troll bridges, little pig houses, gingerbread men traps etc. They will use a hands-on approach to pose questions, make predictions, solve problems, think critically, make decisions, and try and try again when something doesn't go to plan. They will work in a range of partnerships and groups to complete these tasks, showing collaboration, compromise, and kindness skills.

Junior STEM - Term 1, 2025: Mrs Fillis

In Term 1, the Junior students will explore how everyday materials can be physically changed or combined with other materials in a variety of ways for particular purposes. They will be predicting and comparing how the shapes of objects made from different materials can be physically changed through different actions, for example, bending, stretching and twisting. Students will learn to identify materials that can be changed and remade or recycled into new products, for example, paper and plastic. The Juniors will also investigate how around the world, different materials are used to make clothing or build structures/buildings.

SPECIALIST CLASSES - Term 1

STEM/SCIENCE 3-6 (Ms Reed) P-2 (Mrs Fillis)

Performing Arts (Mrs Stodden)

AUSLAN (Miss Jessie)

Phys Ed & Sport (Miss Wight)

Visual Arts (Mrs Charlton)



PERFORMING ARTs (Mrs Stodden)

Hello everyone, I am Mai Stodden and it is wonderful to be back teaching the role of Performing Arts again for the Juniors and a huge welcome to our Prep students too! I can't wait to see what your young person can accomplish this semester during our weekly music sessions.

You will find the Performing Arts room, opposite the bike shed and I will be there on Tuesdays, Wednesdays and Thursdays, should you need to see me. You will also notice names of students popping up on my glass window above my door. These colour coded names are in recognition of students who have demonstrated our school values during our music sessions.

Preps: This term my little maestros will be joining me to explore and participate in the world of music and dance. We will be focusing on listening carefully to songs and using our voice to sing, chant and echo back. They will focus on using their bodies to move, keep beats, repeat patterns and dance movements. Students will listen to a variety of music, using percussion instruments to keep along with the beat. They will explore what music is, what makes us want to move and how it makes us feel. Students will have the opportunity to perform to their peers in small groups and to their class, as well as learn how to be a good audience member.

Juniors: In Performing Arts this semester, Junior students will be focusing on music and dance by exploring body percussion and composing short pieces to perform to their peers in class. They will delve into various music styles, interpreting what they hear, how it makes them feel and how they can use these styles to tell their own story, through music and dance movements. They will explore a repertoire of chants, songs and rhymes to improvise and compose their own songs, using percussion instruments. I look forward to their group performances throughout the term.

So without further adieu - let the show begin! - Mrs S



AUSLAN (Miss Jessie)



Hi everyone, my name is Jessie Sinclair and I am so excited to be back teaching Auslan in 2025. For the first Semester of this year I will be working with the Middles and Seniors and I can't wait to see the progress they will make after last years efforts - they all did so well especially at translating picture story books! The students will start this term with an introduction to Auslan and some revision on everything they learnt last year. Once their knowledge has been consolidated

SPECIALIST CLASSES - Term 1

STEM/SCIENCE 3-6 (Ms Reed) P-2 (Mrs Fillis) Performing Arts (Mrs Stodden) AUSLAN (Miss Jessie)
Phys Ed & Sport (Miss Wight) Visual Arts (Mrs Charlton)



PPrep

This term in P.E., Prep students will focus on learning and following rules and expectations, such as listening for the whistle and following instructions during activities. They will participate in games with and without equipment, helping to develop their fundamental movement skills like running, jumping, and throwing. Additionally, students will take part in weekly Perceptual Motor Program (PMP) sessions. PMP is a movement-based program designed to enhance eye/hand and eye/foot coordination, fitness, balance, locomotion, and eye-tracking skills, supporting their overall physical and cognitive development.

Juniors

This term in P.E., junior students will focus on identifying rules and practicing fair play while creating and participating in physical activities. Through various games, they will learn to follow instructions, work cooperatively, and develop a sense of teamwork and sportsmanship. Additionally, they will continue improving their fundamental movement skills, including dodging, catching, and kicking. These activities will help enhance their coordination, agility, and overall physical confidence, providing a strong foundation for their ongoing skill development in sports and active play.

Middles

This term in P.E., middle school students will apply basic rules and scoring systems while demonstrating fair play and inclusive practices in physical activities. Through various games, they will develop teamwork, sportsmanship, and strategic thinking. Additionally, students will practice movement concepts and strategies to enhance their skills and overall gameplay. Starting mid-term, Grade 4 students will participate in the Bike Ed program, building their confidence and skills in riding while gaining essential safety knowledge. Further details about the Bike Ed program will be sent home with students soon.

Seniors

This term in P.E., senior students will develop their skills through various games, applying movement concepts to enhance their gameplay. They will actively participate in groups and teams, demonstrating positive sportsmanship by encouraging peers and negotiating roles and responsibilities. Additionally, they will refine their ability to adjust effort, space, time, objects, and people to perform effective movement sequences, strengthening their strategic thinking, coordination, and teamwork. Starting mid-term, students will also take part in the Bike Ed program, where they will develop their riding skills and safety knowledge. Further details about the Bike Ed program will be sent home with students soon.

Sporting events in Term 1

Running club will start next week on Wednesday mornings on the playing field from 8:20am to 8:40am. Come along to earn some house points! Each lap = 10 house points.

25th February - District Swimming Carnival for 9-13 year-old students selected from swimming trials

28th March - Summer Lightning Premiership for senior students

Date to be confirmed - 3-6 Cross country (Prep to Year 2 Cross Country will happen later in the year)



[CLICK HERE TO WATCH OUR VIDEO!](#)

1300 035 000

www.teamkids.com.au

We are so thrilled to share this testimonial received from a Kingsley parent last week

Just a quick note to give you the best feedback possible for "Team Kids" and Audrey!

'My Child' attended the holiday program a few times and was initially hesitant because it was the new company... we walked in, Audrey introduced herself, all the children were playing nicely, the room was organised, and no one was screaming. It was the best 1st impression possible.

The next day we arrived early enough to witness the "morning meeting" where I saw Audrey sitting in the corner, with all the children sitting at her feet, some draped around her too. She had their undivided attention. She had full control of the room, when there were children of all different ages, like a fairy Godmother!

It is such a refreshing change. THANK YOU!! We then made additional bookings for 'My Child' because he kept asking to go, he even went to The Big Goose with them- something he had been scared to do because of the daunting idea of going on a bus etc (which honestly, I didn't trust the other company to really do, with him being so young.)

There's a little friend he has, who we have a difficult relationship with, who also attends. When I quickly gave Audrey a "heads up" that she may have to keep an eye on their play at times, she took note and there was not a single incident. The previous educators told me "it's not my job to keep them separate."

'My Child' has asked to go to After School Care, so I'm sending him this afternoon, when he doesn't have to even go because I am home today. It's a place he WANTS to attend.

I cannot commend Team Kids enough!
Thank you so much and please pass this on to whoever should hear it.

Sincerely,
Very happy parents!

FAMILY HANDBOOK

ENRICHING CHILDREN'S LIVES

TeamKids is a **premium OSHC provider** enriching children's lives before school, after school and throughout the school holidays.

Our **child-centred approach** provides you with the comfort of knowing your child(ren) are in safe hands and being enriched at every opportunity.



REGISTER TODAY
1300 035 000

INNOVATIVE TEAMKIDS CLUBS

Each day is a new adventure! We extend and enrich each child's passions and interests through our TeamKids Clubs. Children nominate to join clubs at no extra cost.

FUN EXPERIENCES

TeamKids run educational play-based programs that are child-centred, fun and maximise opportunities for enriching and extending each child's learning and development.

REMARKABLE EDUCATORS

When attending TeamKids, your children are cared for by our passionate, highly experienced & trained educators.

INVOLVED IN THE COMMUNITY

TeamKids builds and maintains respectful, collaborative relationships with families and schools.

HEALTHY & NUTRITIOUS

We provide healthy, nutritious and delicious food each morning and afternoon.

GENUINE RELATIONSHIPS

From the moment you walk through the door, TeamKids provides an atmosphere that is welcoming, safe, relaxed and inclusive.

REMARKABLE PROGRAM MANAGEMENT

We work closely with our services to ensure they have all the support and resources to deliver a remarkable program.



See you soon!



Find out more about your TeamKids service.
teamkids.com.au | 1300 035 000

ADDITIONAL INFORMATION

HOW TO ENROL

It's easy to set up your TeamKids account! To do so head to our website: teamkids.com.au. You'll be required to set up an account by clicking the register button. We can only accept children that are fully registered with TeamKids and have provided any required additional documents.

CHILD CARE SUBSIDY

All our programs are Child Care Subsidy (CCS) approved and may apply to your TeamKids bookings. Centrelink uses your family's annual adjusted taxable income and working hours to determine the percentage of subsidy you are eligible for. For further information about CCS, please visit our website or speak with our Customer Service Team on 1300 035 000.

DELICIOUS MORNING & AFTERNOON TEA

We provide healthy, nutritious and delicious food each morning and afternoon. Our healthy menus cater for food allergies, intolerances, cultural diversity and promote healthy eating. Seasonal fruit and vegetables are served throughout the session with daily specials. During the school holidays - Bring your own lunch!

FAMILY FINANCIAL SUPPORT

We appreciate the relationships which we create with families and local communities. Hence, we encourage parents always to let us know if they are going through any financial troubles. Where possible, we will work with families to find a reasonable solution. For a confidential conversation call our Customer Service on 1300 035 000.



HOURS OF OPERATION - KINGSLEY PARK PRIMARY

SERVICE	TIMES	COST TO PARENTS	AFTER MAX CCS*
Before School Care	6:45 AM - 8:35 AM	\$22.53	\$2.25
After School Care	3:15 PM - 6:15 PM	\$27.77	\$2.78
Curriculum Days	6:45 AM - 6:15 PM	\$80.70	\$8.07
Vacation Care	6:45 AM - 6:15 PM	\$80.70†	\$8.07†

*Child Care Subsidy can provide up to 85% off your fees. **Fees & Hours of operation may be subject to change. †Experience/Activity fees will apply.



BEFORE & AFTER CARE

NO ENROLMENT FEE

We encourage all families to register with TeamKids, so we do not charge an enrolment fee for our Before & After Care service.

BOOKINGS & CANCELLATIONS

You can make bookings and cancellations online up until 12 midday the day of the session, pending availability. For any bookings or cancellations after this time, please contact the service directly on their designated mobile phone which can be found on our website.

Cancellations made within 48 hours of the session commencing will incur the normal fee as an allowable absence and will be charged accordingly. In the event of a medical illness, please email a medical certificate to info@teamkids.com.au WITHIN 48 HOURS of the absence to receive a credit for the booking.

There are no charges for cancellations made before the deadline.

LATE BOOKING FEE

For any bookings made within 48 hours of the session commencing an additional \$5 late booking fee will be charged. This will be included in the attendance sessions total fee. To avoid late surges in bookings, we encourage families to book earlier so that we can staff, plan experiences and resource accordingly.

STATEMENTS & PAYMENTS

For Before & After Care, you will be charged every 2 weeks in arrears via EziDebit. A statement will be emailed to your nominated email address on Monday and payment will be processed the Wednesday following.



VACATION CARE

ADMINISTRATION FEE

For Holiday Programs there is a \$5 administration fee per family for each holiday period.

BOOKINGS & CANCELLATIONS

You can make bookings and cancellations online up until 7 am the day before the session pending availability. For any 'on the day' bookings or cancellations, please contact Head Office directly on 1300 035 000. Cancellations made within 48 hours of the session commencing will incur the normal fee as an allowable absence and will be charged accordingly. Cancellations made with more than 48 hours' notice will not be charged. In the event of a medical illness, please email a medical certificate to info@teamkids.com.au WITHIN 48 HOURS of the absence to avoid being charged for the booking.

LATE BOOKING FEE

For any bookings made within 7 days of the session commencing an additional \$5 late booking fee will be charged per session. This will be included in the attendance sessions total fee. To avoid late surges in bookings, we encourage families to book earlier so that we can staff, plan experiences and resource accordingly.

STATEMENTS & PAYMENTS

Please note that TeamKids will process payment weekly in arrears on a Wednesday via EziDebit. A statement will be emailed to your nominated email address on Monday and payments will be processed the Thursday following.

KINGSLEY PARK NEWSLETTER



WHAT'S BEEN HAPPENING

Dear Families

As we settle into a new school year its with great pleasure that TeamKids has commenced providing VAC and before and after school care at Kingsley Park Primary.

Highlights of VAC program was Boneo Park and The Big Goose.

The first few weeks of Term 1 we will be focusing on getting to know the children and collecting feedback on their preferred activities, including establishing our Clubs memberships.

To date the children have shown a strong interest in LEGO, STEM, construction and craft activities.

We have been working in partnership with the school to address the hot weather and will be running sessions in the music and or science rooms on very hot days.

IMPORTANT DATES



 **MON 3rd February**

Teddy Bears Picnic

 **FRI 14TH February**

Valentines Day



Kind Regards Audrey Bagshaw, Director of Service



Service Mobile: 0481 799 631

Office Phone: 1300 035 000

Service Email: kinglseyparkps@teamkids.com.au

Office Email: info@teamkids.com.au

The Frankston Life Saving Club is hosting a Community Open Day on the 15th Feb, between 10–4.30pm. And I was hoping you could promote this to your school through your social media and newsletter for me?

We are running a community dip on our beach from 10am followed by a BBQ breakfast and a Nippers session between – 11–12noon which will be open to non members aged from 5–14yo. Then there will be demonstrations including first aid, LSV drones and from our Inflatable Rescue Boat (IRB) Racing Team. And then between 3.30–4.30pm we will have Matt from the Marine Mammal Foundation present an interactive talk about the marine mammals in our bay – which is great for both kids and adults alike!




FRANKSTON

LIFE SAVING CLUB

COMMUNITY OPEN DAY

Sat 15 Feb 10-4.30pm

10-10.30am – Beach DIP in front of the club

11-12pm – Nippers Session in front of the club

12-1.30pm – Drone & First Aid demos

2-2.30pm – IRB (Inflatable Rescue Boat) demos

2.45-3.15pm – Life Members Presentation

3.30-4pm – Marine Mammal Foundation Presentation

Throughout the day

Tours of our venue, SSV (ATV) rides and more




Proudly Sponsored by



FLSC - 1/1N Long Island Drive, Frankston





Girls Come and Try Night!

Girls, come and join the Mt Eliza Junior Football Club for fun and footy!

Meet our female coaches and our big U16/18 Girls for an introduction to tackle bags, fun games and drills.

A great way to experience footy in a girls only fun environment with Zooper Doopers & Temporary Tattoo Station to follow the 45 min session.

Girls born: 2013&2014 (U12), 2015&2016 (U10)

Please email: vicepresidentgirls@mtelizajfc.com.au with any queries!

When: Friday 21st February 2025

Time: 4.30-5.30pm

Location: Kunyung Primary School

*In season training at Emil Madsen Reserve



COME & TRY

Netball

NET SET GO	PLAYERS BORN 2016, 2017 & 2018
11U	PLAYERS BORN 2014 & 2015
13U	PLAYERS BORN 2012 & 2013
15U	PLAYERS BORN 2010 & 2011
17U	PLAYERS BORN 2008 & 2009
OPEN	PLAYERS BORN 2007+

JUBILEE PARK FRANKSTON

WINTER SEASON 2025

ALL PLAYER LEVELS WELCOME!

Ready. Net. Go!

CONTACT: ycwnetballfrankston@gmail.com




SCAN TO REGISTER

ADVERTISE HERE



Ballam Park
Primary School



Active Schools

achper

VICTORIA

Department of Education and Training

ACTIVE SCHOOLS COMMUNITY EVENT

THURSDAY 13th FEBRUARY 2025

2.45pm - 5.00pm at Ballam Park Primary School

(parking off Naranga Drive, past pre-school)

Ballam Park PS is a proud Active School, and we are holding a community event to promote clubs and organisations that encourage physical activity. We want all children to have the opportunity to participate in activities that promote physical and mental health, bring members of the community together and help learn new skills.

We have invited clubs, organisations and businesses from all over Frankston to exhibit and share how they encourage children to be more active. Dance schools, footy clubs, netball teams, fitness groups, archery clubs and many more will be there to help get you started.

Door Prize ticket for every family who attends!

Refreshments available to purchase on the day!

Event Coordinators: Peita Cooper and Jo Lothian 97875614

Cost: free to everyone!



BRUCE PARK NETBALL CLUB

BPNC is looking for players born
2016, 2017 & 2018 to join our Net Set Go
team in Winter 2025

CONTACT US TODAY!

bruceparknetballclub@gmail.com

COME &
TRY
NETBALL
JUBILEE
PARK
FRANKSTON

#team
kristenandjax



Bruce Park
Netball Club

CONTACT THE SCHOOL
OFFICE ON 9789 0077
TO FIND OUT HOW!



DON'T MISS
THE BUS!

INSTRUMENTAL LESSONS

Wednesday

Spaces in Drums and Singing

Ready to jumpstart your little maestro's musical adventure?
Book now for music lessons designed just for
primary school Rockstars!

WWW.THEMUSICBUS.COM.AU

1300 168 742



All Abilities Football TEENS & KIDS - NEW PLAYERS WELCOME



Girls and Boys Players wanted to join our football teams - Ages from 9 - 16 years

Apply now for 2024 - Try out in February

TEAMS LOCATED AT

NORTHCOTE - DOREEN - FOOTSCRAY - WILLIAMSTOWN - GREENSBOROUGH
FRANKSTON - COLLINGWOOD - AVONDALE HEIGHTS - & MORE

- Fantastic community environment for parents to socialize and support each other
- Welcoming and friendly football club - with great facilities.
- A fun, inclusive activity for kids with special needs - Great sports physiotherapy!
- Training every Saturday at 10 to 11.15am. Local matches throughout the season.

Please contact Matthew Packwood Team manager
Phone: 04 787 999 83 Email: info@matthewpackwood.com



FOOTBALL FOR
ALL ABILITIES

SCHOOL CANTEEN



The school canteen is open on
Monday & Friday weekly,
unless otherwise advised.

Orders can be made conveniently via the QKR App
until 8:45am on the lunch order day!

Any questions or allergy related
information can be provided by Leigh
Simpson, our amazing Canteen Manager.
Please contact Leigh on
0407 823 799.

Volunteer helpers are needed each
Monday and Friday in the canteen. Please
contact Leigh to offer your assistance.



Monday

KINGSLEY PARK PS CANTEEN MENU - MONDAY TERM 1 2025		
SANDWICHES <small>Wholemeal or White bread. Gluten Free + 50c</small>		
VEGETITE	\$3.00	
CHEESE	\$3.20	
VEGETITE AND CHEESE	\$3.50	
HAM	\$4.00	
^ ADD EXTRAS	.60 EA	
CHICKEN	\$4.00	
^ ADD EXTRAS	.60 EA	
EGG, LETTUCE, MAYO	\$4.50	
TOASTIES - <small>Wholemeal or White bread. Gluten Free + 50c</small>		
TINNED SPAGHETTI	\$2.00	
BAKED BEANS	\$2.00	
VEGETITE	\$3.00	
CHEESE	\$3.20	
VEGETITE AND CHEESE	\$3.50	
HAM	\$4.00	
HAM ADD EXTRAS	.60 EA	
CHICKEN	\$4.00	
CHICKEN ADD EXTRAS	.60 EA	
WRAPS		
CHICKEN AND SALAD	\$6.50	
HAM AND SALAD	\$6.50	
FALAFEL AND HUMMUS	\$6.00	
TOASTED WRAPS		
HAM AND CHEESE	\$4.60	
EGG, BACON AND SAUCE	\$5.20	
CHICKEN TENDERS & CHEESE	\$6.00	
SALAD BOWL <small>NEW</small>	\$5.00	
LETTUCE, TOMATO, CUCUMBER, CARROT & CHEESE OPTION - FRENCH DRESSING <small>Optional Extras - Chicken + \$1.50, Avocado or Egg +60c</small>		
TERM SPECIAL		
WEDGES <small>Wedges with/without Sweet Chilli Sauce & Sour Cream</small>	\$5.00	
EXTRA SPECIAL		
MEAL DEAL <small>Wedges with/without Sweet Chilli Sauce & Sour Cream Cookie- Anzac or Choc chip Flavoured Milk- Strawberry or Chocolate OR Juice - Apple or Orange</small>	\$7.00	
DRINKS		
NIPPY'S JUICE BOX <small>Apple, Orange or Apple Blackcurrent</small>	\$2.00	
NIPPY'S MILK <small>Chocolate or Strawberry</small>	\$2.50	
SNACKS		
DIP AND VEGGIE STICKS <small>Carrot/Celery with Tzatziki or Hummus dip</small>	\$1.50	
CHEESE AND CRACKERS X4	\$1.50	
BOILED EGG	\$1.00	
FRESH FRUIT - <small>Apple, Orange or Banana</small>	\$1.20	
FRUIT CUPS <small>SPC two fruits</small>	\$1.00	
COOKIE - <small>Anzac or Choc Chip</small>	\$1.00	
POPCORN	.50C	
MINI MUFFINS	.50C	
JELLY CUPS <small>Red, Orange or Green- with or without fruit</small>	\$1.30	
FROZEN QUELCH STICKS	\$1.00	
FROZEN YOGHURT BLOCKS <small>Strawberry, Mango or Vanilla</small>	\$1.50	
PLEASE NOTE:		
<ul style="list-style-type: none">Whilst we offer Gluten Free Choices, they are prepared with care in a Gluten environment.Check QKR! for more informationALLERGEN information is available on the Sentral app under resources or contact Leigh Simpson- 0407 823 799		
		 

Friday

KINGSLEY PARK PS CANTEEN MENU - FRIDAY TERM 1 2025		
SANDWICHES OR TOASTIES <small>Wholemeal or White bread. Gluten Free + 50c</small>		
BASIC:		
VEGETITE	\$3.00	
CHEESE	\$3.20	
EGG	\$3.50	
CHICKEN, TUNA OR HAM	\$4.00	
SALAD SANDWICH	\$4.00	
EXTRA FILLINGS: <small>Cheese, Lettuce, Tomato, Cucumber, Carrot, Beetroot, Egg</small>	.60 EA	
BAKED BEAN JAFFLE	\$2.00	
WRAPS		
CHICKEN, TUNA OR HAM	\$6.50	
<small>Choose from: Cheese, Lettuce, Tomato, Cucumber, Carrot and Mayo</small>		
<small>*Please note *all wraps include all salad items unless specified otherwise</small>		
HOT LUNCH		
SPAGHETTI BOLOGNESE		
Full serve	\$5.00	
Half serve	\$3.50	
PLAIN PASTA	\$3.50	
<small>With or without cheese and/or butter</small>		
PIZZA	\$4.50	
<small>Choose from: -Ham, cheese and pineapple -Ham and cheese -Capicum, cheese, tomato and mushroom -Chicken and BBQ sauce -Cheese, tomato paste</small>		
SAUSAGE ROLL	\$3.50	
SPINACH AND RICOTTA ROLL	\$3.50	
CORN COB	\$2.50	
PARTY PIE	\$1.50	
PARTY SAUSAGE ROLL <small>NEW</small>	\$1.50	
LUNCH SPECIALS: <small>These are only available on the FRIDAY dates listed.</small>		
WEEK 1 - (31ST JANUARY)		
NO CANTEEN		
WEEK 2 & 3 - (7TH & 14TH FEBRUARY)		
HOT DOGS	\$4.50	
<small>With/ without Mustard. Cheese extra 50c Tomato sauce provided to classroom.</small>		
WEEK 4 & 5 - (21ST & 28TH FEBRUARY)		
HOKKIEN NOODLE & CHICKEN SALAD	\$5.00	
<small>Noodles, Shredded Chicken, Carrot, Cucumber, Capsicum, Soy sauce, Sweet Chilli sauce</small>		
WEEK 6 & 7 - (7TH & 14TH MARCH)		
MAC AND CHEESE	\$5.00	
WEEK 8 - (21ST MARCH)		
SUSHI \$3.50		
<small>Choose from: -Grassy chicken -Tuna -Avocado -Vegetable -California</small>		
RICE PAPER ROLLS \$3.50		
<small>Choose from: -Chicken -Vegetable</small>		
WEEK 9 & 10 - (28TH MARCH & 4TH APRIL)		
4 CHICKEN NUGGETS	\$4.00	
<small>Extra nuggets \$1.00 each Tomato sauce provided to classroom.</small>		
<small>PLEASE NOTE -WHILST WE OFFER GLUTEN FREE CHOICES, THEY ARE PREPARED WITH CARE IN A GLUTEN ENVIRONMENT.</small>		
		 
		

KINGSLEY PARK PS CANTEEN MENU - FRIDAY TERM 1 2025		
FRUIT		
FRUIT SALAD - SEASONAL FRUIT		
• LARGE	\$6.00	
• SMALL	\$3.50	
FRESH FRUIT - <small>Apple, Orange or Banana</small>	\$1.20	
FRUIT CUPS <small>SPC two fruits</small>	\$1.00	
DRINKS		
NIPPY'S JUICE BOX <small>Apple, Orange, Apple Blackcurrent</small>	\$2.00	
NIPPY'S MILK <small>Chocolate or Strawberry</small>	\$2.50	
SNACKS		
BANANA BREAD	\$1.50	
DIP AND VEGGIE STICKS <small>Carrot/Celery with Tzatziki or Hummus dip</small>	\$1.50	
COOKIE <small>Anzac or Choc Chip</small>	\$1.00	
POPCORN	.50C	
MINI MUFFINS	.50C	
JELLY CUPS <small>Red, Orange or Green- with or without fruit</small>	\$1.30	
FROZEN TREATS		
FROZEN QUELCH STICKS	\$1.00	
FROZEN YOGHURT BLOCKS <small>Strawberry, Mango or Vanilla</small>	\$1.50	
EXTRAS		
SAUCE <small>Choose from - BBQ, Soy, Sweet Chilli Tomato Sauce is provided to each classroom</small>	.20C	
PLEASE NOTE:		
<ul style="list-style-type: none">Whilst we offer Gluten Free Choices, they are prepared with care in a Gluten environment.Check QKR! for more informationALLERGEN information is available on the Sentral app under resources or contact Leigh Simpson- 0407 823 799		
		 

Kingsley Park Primary School

ENROL NOW FOR 2026



Please contact the school office on 9789 0077 to book your school tour, alternately an email enquiry can be sent to: kingsley.park.ps@education.vic.gov.au

SCHOOL TOUR DATES - Term 1

Thursday 20th February @ 9am
Monday 3rd March @ 9am
Thursday 6th March @ 9am
Thursday 20th March @ 9am
Wednesday 26th March @ 9am
Wednesday 2nd April @ 9am
Thursday 3rd April @ 9am



Enrolment applications for Prep 2026 must be received by Friday 25th July 2025

- Outstanding synthetic phonics program
- Engaging hands on maths learning
- Strong focus on student wellbeing
- Large open grounds amongst a beautiful natural environment
- Highly successful Prep transition program, preparing for a happy and exciting start to school!

Please visit our school website at [KPPS School Enrolment Information](#) for additional enrolment information



Respect Excellence Resilience Co-operation Community

